

HOKKAIDO EXPRESSWAY PASS

**Foreign Visitors
to Japan Only!**

1 FIXED PRICE FOR PEACE OF MIND!
Peace of mind, no matter how far you travel by expressway in

Peace of mind, as no matter how far you travel by expressway in Hokkaido, the price is fixed.

2 NO NEED TO SPEAK OR READ JAPANESE!

When you use ETC, there's no need to come to a complete stop at toll booths.

When you use ETC, there's no need to come to a complete stop at toll booths.
And you need not worry about communication in Japanese. *Please pass through the ETC gate at no more than 20 km/h.

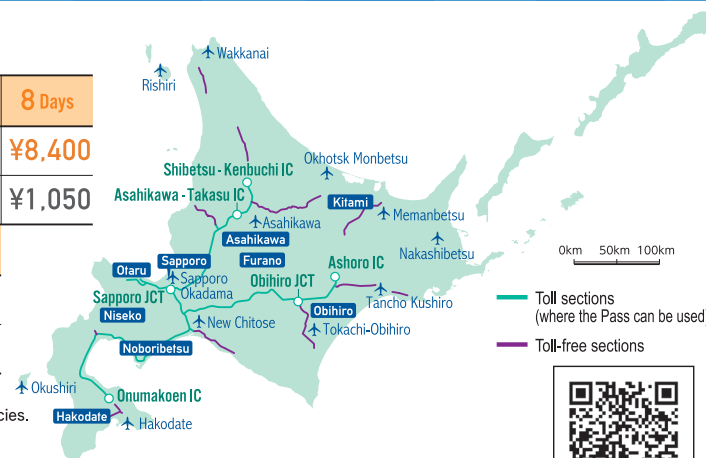
3 SAVE MORE TIME!

Hokkaido is huge; it's about 300 km

Hokkaido is huge: it's about 300 km from New Chitose Airport to Hakodate, and about 450 km to Shiretoko. Shorten your traveling time by using the expressways.

Number of days of use	2 Days	3 Days	4 Days	5 Days	6 Days	7 Days	8 Days
Price (yen)	¥3,700	¥5,200	¥6,300	¥6,800	¥7,300	¥7,800	¥8,400
Per Day (yen)	¥1,850	¥1,733	¥1,575	¥1,360	¥1,217	¥1,114	¥1,050
Number of days of use	9 Days	10 Days	11 Days	12 Days	13 Days	14 Days	
Price (yen)	¥8,900	¥9,500	¥10,000	¥10,500	¥11,000	¥11,500	
Per Day (yen)	¥989	¥950	¥909	¥875	¥846	¥821	

- ◎The rental charges for the vehicle and ETC card are not included.
- ◎Only valid for vehicles classified as "ordinary passenger cars" according to expressway policies.



Website http://www.driveplaza.com/trip/drawari/hokkaido_expass/en.html

en.driveplaza.com/

DoRaPuRa

あなただに、ベスト・ウェイ。



Published by East Nippon Expressway Company Limited, October 2019

HOKKAIDO

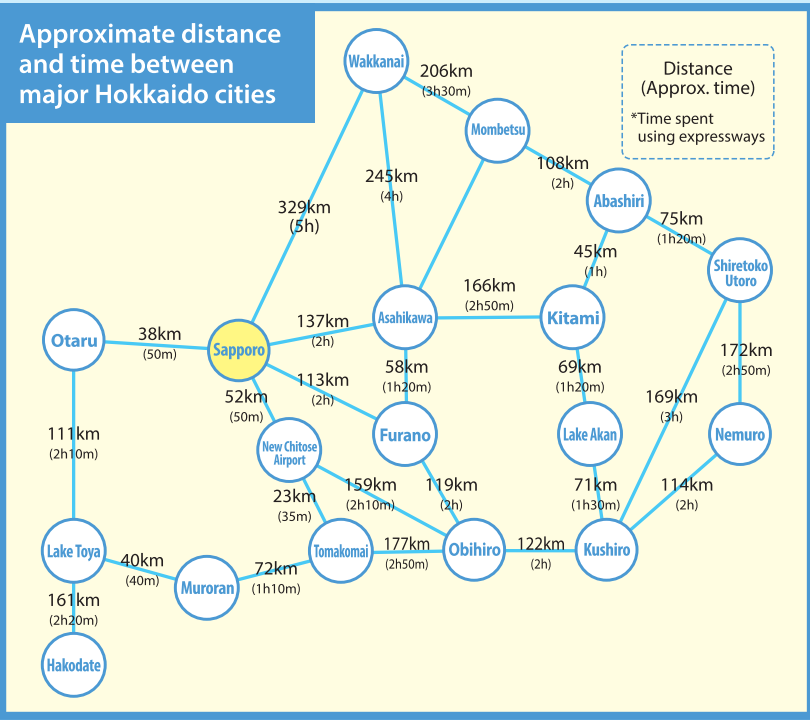
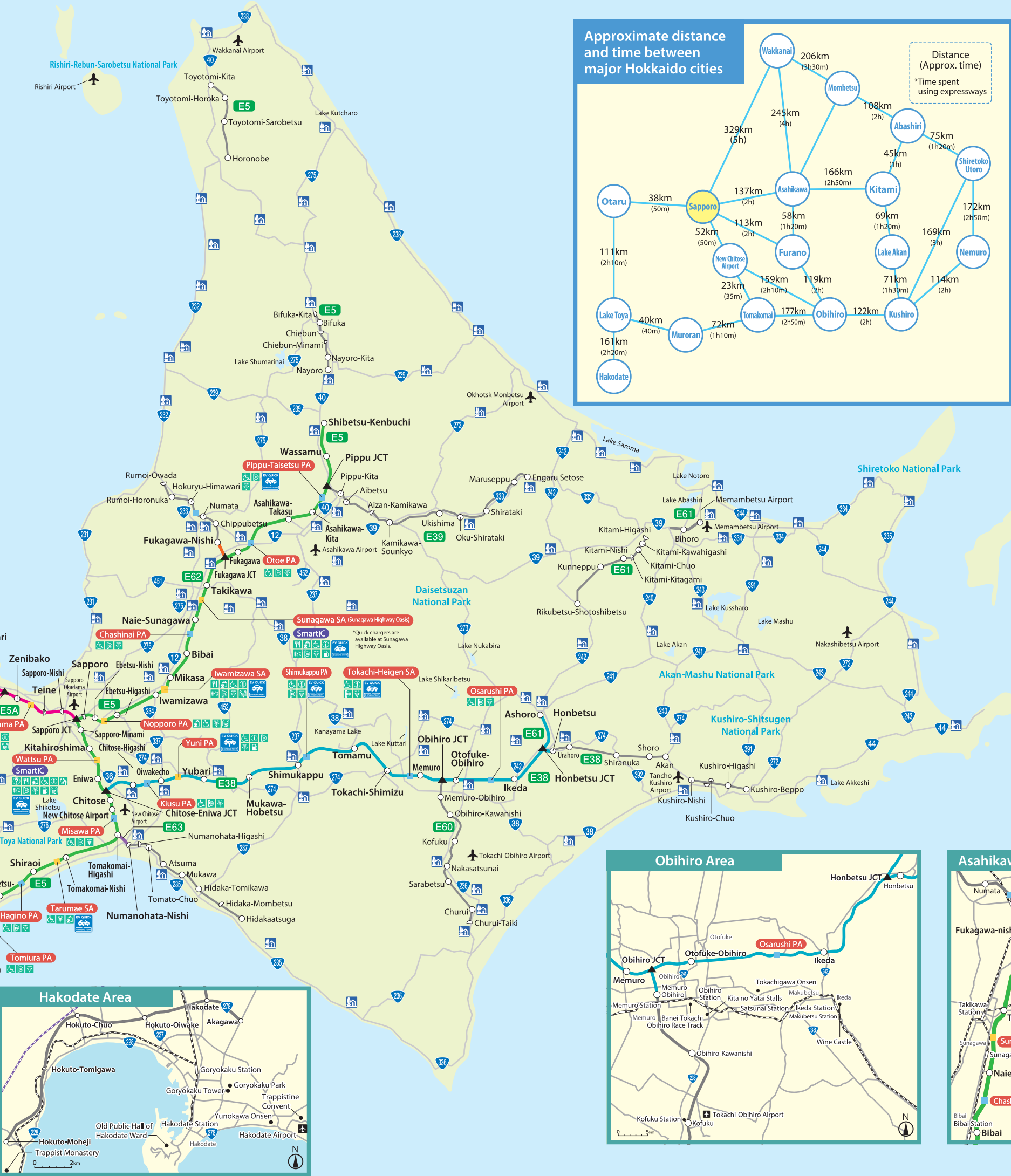
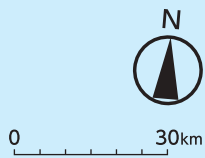
DRIVE GUIDE 2019



From magnificent views to delicious food, enjoy dynamic, fascinating Hokkaido in any season.



The expressways of Hokkaido



Map Key

- E5 DO-O EXPWY
- E5A SASSON EXPWY/SHIRIBESHI EXPWY
- E27 DOTO EXPWY
- E63 HIDAKA EXPWY
- E62 FUKAGAWA-RUMOI EXPWY
- Hokkaido Development Bureau Management Zone (Free)
- JR Track

Guide to SA/PA marks

Information	Food court
Highway information terminal (Highway information corner)	Shopping area
Accessible toilet	Baby-care room
Wheelchair lending (No charge)	Vending machines
Wi-Fi	Filling station
Pedestrian entrance	

EV QUICK
Electric Vehicle Fast Charging Station

Michi-no-Eki (Roadside Station)
Restrooms restaurants, wi-fi, etc. available.



The four seasons in Hokkaido

Spring with its fresh verdure and beautiful flowers, pleasant and invigorating summer, autumn with its abundant crops and colorful leaves, and winter swathed in snowscapes. In Hokkaido, which has four particularly distinct seasons even for Japan, there is magnificent charm in each of them.



Urausu



Furano



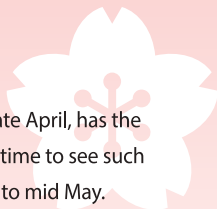
Kutchan



Hakodate

Hokkaido spring

Hokkaido, where cherry blossoms bloom beginning in late April, has the latest cherry blossom viewing season in Japan. The best time to see such blossoms as Yoshino cherry and Sargent's cherry is early to mid May. In addition to cherry blossoms, flowers you can see in Hokkaido in spring include moss phlox, tulips and lilacs. Lovely wild flowers like dogtooth violet and *Corydalis ambigua* also begin to bloom in the fields.



Hokuryu



Shakotan

Hokkaido summer

The best time to see such flowers as lavender, lilies, sunflowers and sage in Hokkaido is summer. Summer is the outdoor season when you can be active and enjoy nature. Examples of summer outdoor activities include rafting down a river in a large rubber boat and going for a leisurely hike amid beautiful scenery. There are also beer gardens held all over Hokkaido, where you can hold a beer in one hand while tasting delicious Hokkaido specialty dishes.



Kutchan



Teshikaga



Winter driving memo



In a typical year in Hokkaido, snow begins falling in mid-October and there is sometimes still snow on the roads in May. During this season be sure to put snow tires on your car and be extra careful when driving on snowy roads.

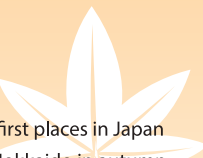


Sapporo



Niki

Hokkaido autumn



Daisetsuzan Volcanic Group and Mount Asahi are the first places in Japan where the leaves begin to change color in the fall. In Hokkaido in autumn, not only can you enjoy viewing colorful leaves quite early, but also cosmos are in full bloom between early September and late October. Autumn is the season for harvesting various crops from the vast farmlands of Hokkaido, and during this time of year you can partake of apple and grape picking in orchards. Seafood is also in season in the fall, including salmon, the most famous Hokkaido fish.



Akan



Sapporo

Hokkaido winter



Events related to snow and ice are held throughout Hokkaido in winter, including the world-famous Sapporo Snow Festival. For scenery you can only see in Hokkaido in winter, don't miss the drift ice in the Sea of Okhotsk. Hokkaido is said to be perfect for skiing and snowboarding because it has less humidity and better quality snow than Honshu. Winter activities are wildly popular in Hokkaido, including of course the classic winter sports, but also such sports as snowshoeing and dogsledding.

Temperature and snowfall in major cities

	Average temperatures (in degrees Celsius)				Average winter snowfall (cm)*			
	Spring (May)	Summer (Aug.)	Autumn (Oct.)	Winter (Feb.)	Dec.	Jan.	Feb.	March
Sapporo	11.8	22.3	9.2	-3.1	27	57	64	50
Hakodate	11.9	22.0	12.2	-2.6	8	21	23	3
Obihiro	11.1	20.2	10.0	-6.2	24	38	47	49
Kushiro	8.1	18.0	10.6	-4.7	6	9	12	2
Asahikawa	11.8	21.1	9.2	-7.5	24	49	52	45

*Sapporo District Meteorological Observatory 2015-2017, snow depth measured on the 15th of each month (3-year average)

Clothing advice



April-June

This time of year the sun's rays get warmer but the winds are often still cold. It sometimes suddenly gets cold in the morning or at night, so it's a good idea to keep a light coat or jacket with you.



July-Sept.

You can be comfortable wearing a short-sleeve shirt during the day, but after mid-August the temperatures suddenly drop in the morning and evening, so be careful. When you visit cool mountains and lakes, taking a light jacket with you will give you peace of mind.



Oct.-Nov.

During this season, it gradually gets colder in the morning and evening, and the temperature extremes during the day get wider. Have a thin down jacket or thin coat at the ready.



Dec.-March

Choose a jacket or coat made with an emphasis on protection against cold, layers that are easy to take off and put on and footwear with good traction. Scarves, gloves and hats are effective for keeping out the cold.

Hokkaido foods

Delicious food may be the thing you look forward to most when you take a trip to Hokkaido. The prefecture is full of appetizing offerings including dishes made using seafood and mountain vegetables, local dishes such as ramen and Jingisukan (grilled mutton with vegetables), and sweets made from fresh dairy products.



Sushi

In Hokkaido, which has plenty of delicious seafood, sushi made using seasonal ingredients must not be missed. You can enjoy all sorts of fresh sushi toppings ranging from standards like sea urchin, salmon roe, scallop and Hokkigai to seasonally available ones such as Pacific saury and herring. Whether eating sushi at a restaurant with a professional sushi chef or at a casual conveyor belt sushi place, you may find more satisfaction than you imagined.



Soup curry

This is a spicy soup-type curry born in Sapporo in the 1970s. This dish is characterized by smooth soup and dynamic ingredients such as large pieces of vegetables and whole chicken legs, and there are many restaurants that specialize in it. Most people put rice in the soup and let it soak it up.

Ramen

In addition to the big three Hokkaido ramens — Sapporo miso, Hakodate salt and Asahikawa soy sauce — new local varieties are popping up throughout the prefecture. Be they shrimp miso, curry or another kind, by all means try the ramens of Hokkaido, which feature a variety of soup, noodle and topping types.



Cafe sweets

Hokkaido is also a kingdom of sweets, having a luxuriously good selection of ingredients for making them, including fresh milk, butter, cheese and other dairy products, as well as wheat, eggs and adzuki beans. You can eat first-rate sweets at various establishments throughout the prefecture, be they soft-serve ice cream, pudding or cheesecake.



Jingisukan

About 100 years ago, Jingisukan was created as a dish to use the meat of sheep raised in Hokkaido to produce wool. There are two types of Jingisukan — that made from the meat of lambs a year old or younger and that made from mutton — and there are two ways of eating it: dipping it in sauce after grilling it or seasoning it before cooking it.

Hokkaido onsen

Hokkaido is sometimes referred to as an onsen paradise. There are popular onsen towns throughout the prefecture with unique water properties, abundant hot spring water, atmospheres that vary with the four seasons and magnificent views. Why not try relaxing in a hot spring bath at the end of a day of travel?

Hokkaido has more hot spring resorts than anywhere in Japan

Blessed with splendid natural scenery and having many volcanoes, Hokkaido is home to many hot spring resorts that have been extensively used. With 250 hot springs, Hokkaido has the most in Japan, and it boasts the second highest total hot spring water output. It's popular to go around to various hot springs wherever you are in Hokkaido.



Noboribetsu-onsen, the 'onsen department store'

Noboribetsu-onsen, which has 10,000 tons of water output per day, is the most famous hot spring town in Hokkaido. Noboribetsu, which is sometimes called "the onsen department store" because it has nine types of hot spring water, allows visitors to easily go around and try different types of hot spring water. The water sources that support Noboribetsu-onsen, such as Jigokudani and Oyunuma, are also popular tourist destinations.

Dynamic geysers

Geysers are hot springs that spout from the ground periodically. At Shikabe Kanketsusen Park in Shikabe, you can see a highly unusual geyser. Watch the geyser that spouts 500 liters of water 15 meters high every 12 minutes while soaking your feet in a foot bath.



The only one in the world! An open-air hot spring bath atop ice

Shikaribetsuko, the highest-elevation natural lake in Hokkaido, completely freezes over in midwinter. At Shikaribetsuko Kotan (Village), which appears atop the lake, you can experience an open-air hot spring bath on the surface of the ice that is said to be one of a kind. The open-air bath amid all-white scenery is something you should definitely try.



An internationally rare moor hot spring

Tokachigawa onsen in the Tokachi region is a moor hot spring, which means it has a type of water with plant-derived sediment that is rare throughout the world. The hot spring water, which wells up through peat, is mild and dark reddish brown. Because it doesn't irritate the skin and contains plenty of natural moisturizing ingredients, it is popular among women as beauty-enhancing water that gently adapts itself to the dermis.



Photo: Tokachigawa Onsen Tourism Association

Learn about Ainu culture

The Ainu people, who have lived in Hokkaido in harmony with nature since before the Japanese arrived, have their own rich culture that includes their own language, oral literature and traditional etiquette. Even today, their precious culture continues to be handed down, such as through a ceremony to welcome new salmon and an Ainu language speech contest.



Appreciate Ainu dance, which conveys a high level of spirituality Akanko Ainu Theater Ikoro

This is a facility where you can watch traditional Ainu dance, which is registered by the Japanese government as an Important Intangible Folk Cultural Property and by UNESCO on the list of Intangible Cultural Heritage of Humanity. Ainu dance, which expresses respect and appreciation for ancestors and gods, has a simple power and mystic beauty, and it resonates in the heart of the viewer.

Address: 7-84, Akankoonsen 4-chome, Akancho, Kushiro
Closed: Irregular closures
Operating hours: Inquire for details
<http://www.akanainu.jp/>

Come into contact with the culture and life of the Ainu people



Nibutani Ainu Culture Museum

This museum is divided into four zones: "Ainu," a collection of everyday items that have become folk art; "Kamui," where you encounter spiritual culture such as prayer and faith; "Moshiri," which relates to farming, hunting, funerals and the like; and "Moreu," which focuses on Ainu designs. In total, about 4,000 items are on display.

Address: 55 Nibutani Biratori-cho, Saru-gun
Open every day April 16 to Nov. 15 and closed on Mondays from Nov. 16 to April 15.
Closed Dec. 16 to Jan. 15.
Operating hours: 10 a.m. to 5 p.m.
<http://www.town.biratori.hokkaido.jp/biratori/nibutani/>

Many and various display items that teach about Ainu life Sapporo Ainu Cultural Promotion Center 'Sapporo Pirka Kotan'

Because you can take photos of and touch Ainu traditional handicrafts, clothing and the like at this facility, you can feel closer to the Ainu culture. There are also Ainu cultural workshops available (for a fee; reservations required). They include embroidery with Ainu designs and making *mukkuri* (Ainu mouth harp).

Address: 27 Koganeyu, Minami-ku, Sapporo
Closed: Mondays, holidays, the final Tuesday of every month and during the year-end and New Year holidays (Dec. 29 to Jan. 3)
Operating hours: 8:45 a.m. to 10 p.m. (exhibition room and garden 9 a.m. to 5 p.m.)
<http://www.city.sapporo.jp/shimin/pirka-kotan/>



Learn about the history of Hokkaido's settlement

When the new Meiji government was established in 1868, Yezo was renamed Hokkaido, and in 1869, the Hokkaido Development Bureau was established. The main objective of the Hokkaido Development Bureau was developing resources for modernization. Because advanced technology in such areas as agriculture, architecture and public works was needed to develop Hokkaido, officials invited foreign engineers from the United States and elsewhere. At first, the Hokkaido Development Bureau was located in Hakodate, which was a hotbed of interaction with foreign countries because it had one of Japan's first ports. However, in consideration of geographical balance, a decision was made in 1871 to move its base of operations to Sapporo. Otaru, which has a port and is near Sapporo, flourished at this time. Otaru, which grew as a stopover for maritime transportation, was called "the Wall Street of the North" because of the rapid development of its financial industry. The Hokkaido Government Office was inaugurated in 1886 to replace the Hokkaido Development Bureau, which had been abolished in 1882. The Hokkaido Government Office building completed in 1888 is now the Red Brick Office. The development of Hokkaido involved a succession of hardships. The efforts of pioneers who overcame unsparing nature and cleared primeval forest built the cornerstone of the Hokkaido of today.



Retains the appearance of Otaru from when it was a financial center The Bank of Japan Otaru Museum

The Bank of Japan Otaru Museum retains the appearance of Otaru from the days when it was called "the Wall Street of the North." Today it is open to the public as a financial museum that teaches about the role of the Bank of Japan and financial mechanisms. It has a popular section where you can experience how heavy 100 million yen is.

Address: 11-16, Ironai 1-chome, Otaru
Closed: Wednesdays (except holidays), during the year-end and New Year holidays (Dec. 29 to Jan. 5) and during occasional temporary closures
Operating hours: 9:30 a.m. to 5 p.m. (Opens at 10 a.m. between December and March.)
<http://www3.boj.or.jp/otaru-m/>



A brick building that symbolizes Hokkaido's pioneer era Former Hokkaido Government Office (Red Brick Office)

This is a famous Sapporo tourist destination located near JR Sapporo Station and Odori Park. Built in 1888, the building features an American-style Baroque Revival architectural style that was cutting edge at the time. It contains an archive and a Karafuto-Sakhalin related resource library, which are open to the public.

Address: Nishi 6-chome Kita 3-jo, Chuo-ku, Sapporo
Closed: During the year-end and New Year holidays
Operating hours: 8:45 a.m. to 6 p.m.
<http://bit.ly/akarenga>



Take a trip back to the Hokkaido of yore in this village full of historical buildings Historical Village of Hokkaido

This outdoor museum teaches about industry, life and culture during Hokkaido's pioneer era. This site is so large it takes half a day to tour it at a leisurely pace. Historical buildings from all over Hokkaido have been dismantled and relocated here, where they are being preserved. We recommend you go around by horse-drawn tram in the summer and horse-drawn sled in the winter.

Address: Konopporo 50-1 Atsubetsucho Atsubetsu-ku, Sapporo
Closed: Open every day May to September and Mondays October to April. Closed for the year-end and New Year holidays (Dec. 29 to Jan. 3).
Operating hours: 9 a.m. to 5 p.m. May to September, and 9 a.m. to 4:30 p.m. October to April
<http://www.kaitaku.or.jp>

Encounter the history of Hakodate, which flourished as an international trade port Former British Consulate in Hakodate

This is a building that was built in 1913 and used as the British Consulate until 1934. Since 1992 it has been open to the public as a museum to commemorate the opening of the port, and you can enjoy tea time in the first-floor tea room while gazing at an English garden.

Address: 33-14 Motomachi, Hakodate
Open 365 days per year, seven days per week
Operating hours: 9 a.m. to 7 p.m. (Closes at 5 p.m. from November to March.)
<https://hakodate-kankou.com/british/>



Enjoy Hokkaido as depicted in stories

Hokkaido is the setting of various movies, TV dramas and anime, with its beautiful, magnificent scenery, atmospheric buildings and other features. Become the character and set out on a dramatic trip to weave a story of your own.

The Doto Area

'If You Are the One'

The setting for the latter half of the Chinese movie "If You Are the One," when the story reaches its climax, is the Doto area of Hokkaido. The film imprinted in the minds of many people the quiet, beautiful scenery of such places as Kushiro, Abashiri, Shari and Akkeshi and set off a boom in Chinese tourism to Hokkaido.

Recommended gift for back home

Dairy sweets

Luxurious sweets like cookies, cheese souffle and chocolate made using high-quality Hokkaido ingredients such as fresh dairy products (Hokkaido having a thriving dairy farm sector), adzuki beans, wheat flour and sugar are essential gifts for back home when visiting Hokkaido.



Lake Toya

'Gin Tama'

In "Gintama," the anime whose live-action film version was a smash hit, the wooden sword of the main character has the characters for "Lake Toya" carved into it. This wooden sword is an extremely popular souvenir and gift among visitors to Lake Toya. The Toyako Manga-Anime Festa is held every June at Lake Toya, and nearly 80,000 people attended in 2018.

Recommended gift for back home

Folk craft and handicrafts

We recommended wood carvings of such animals as bears and owls, old standbys, as well as Ainu folk craft items like embroideries and accessories. At tourist destinations, wooden swords with the place name on them enjoy a firmly rooted popularity. Hokkaido leather-product makers' bags and wallets also have an established reputation for high quality.



Otaru

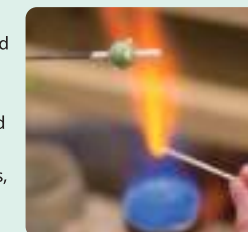
'Love Letter'

The love story "Love Letter," which impressively depicts the streets of Otaru in winter, still enjoys deeply rooted popularity more than 20 years after its release. Why not take a walk through Otaru to check out the locations used in the movie — Mount Tengu, the Former Otaru Branch of Nihon Yusen Co., Canal Plaza, Otaru City Hall and more — while remembering scenes from the film.

Recommended gift for back home

Studio glass

There are glass studios throughout Hokkaido, but in Otaru city, which had a thriving herring fishing industry, studio glass was particularly active because round glass buoys were used in fishing. There are many facilities where you can try making glass crafts, so why not create your own original souvenir?



Abashiri Prison Museum

'Golden Kamuy'

In the adventure survival story "Golden Kamuy," which unfolds in Hokkaido in the last days of the Meiji era (1868-1912), it is Abashiri Prison that holds the key to the buried Ainu gold that is central to the story. The prison is open to the public as Abashiri Prison Museum. Dismantled and relocated prison buildings are designated as important cultural properties.

Address: 1-1 Aza Yobito, Abashiri, Hokkaido
Open 365 days per year, seven days per week
Operating hours: 8:30 a.m. to 6 p.m. (May to September),
9 a.m. to 5 p.m. (October to April)
<https://www.kangoku.jp/>

Recommended gift for back home

Peppermint products

Kitami is a famous peppermint producing area that used to produce more than 70 percent of the world's peppermint. Products with the flavor of peppermint, which contains a lot of menthol compared to other mints, are popular gifts to purchase in Hokkaido. These products include peppermint oil, peppermint candy and peppermint sweets made from beans.



Kushiro Shitsugen National Park

'When Marnie Was There'

The anime film "When Marnie Was There" was based on a children's novel of the same name by British novelist Joan G. Robinson. The setting of the story shifts from England to Hokkaido, but the main setting is the Kushiro wetlands. The location of the old Western-style house Marnie lived in is said to be modeled on Lake Mochirippu.

Lupin the Third spot

'Lupin the Third'



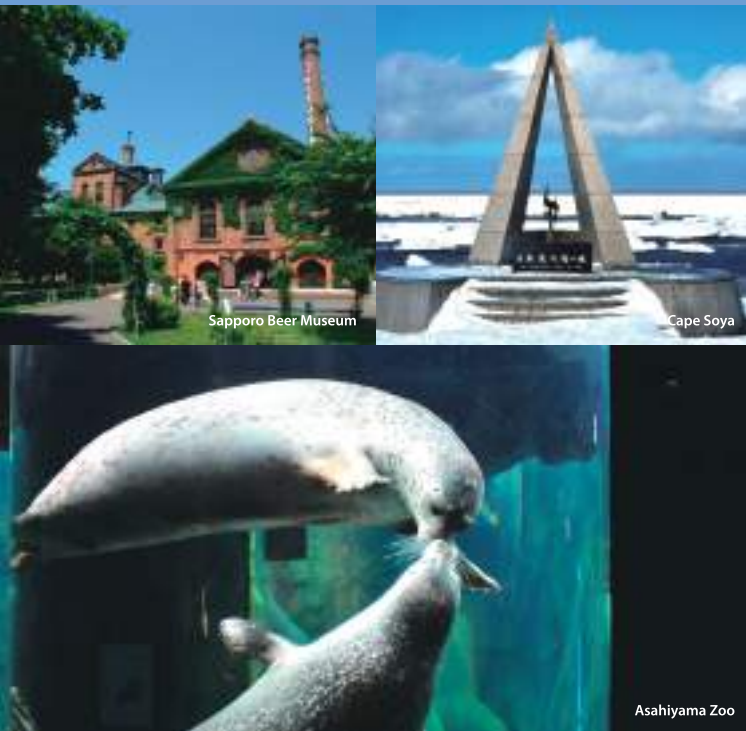
The Kiritappu area of Hamanaka, the hometown of original "Lupin the Third" creator Monkey Punch, also was the setting for the TV special "Lupin III: Elusiveness of the Fog." In Kiritappu you will find many familiar characters from the manga around town. Take some photos with Lupin and the other characters.

Address: Kiritappu, Hamanaka-cho Inquiries: 0153-62-2111
Lupin the Third Takarajima Island plan
<http://www.hamanaka-lupin.com/>

Northern Area

Sample itinerary

The natural environment, which is severe even for Hokkaido, created the wild, beautiful scenery. Seafood reared in the northern sea and produce and dairy products raised on abundant, vast land are delicacies that can only be tasted here.



Eastern Area

Sample itinerary

The magnificent scenery everyone imagines when they hear the name Hokkaido can be found here. Fully experience the charms of travel through the Eastern Area's world-famous nature, delicious food, unique and abundant hot springs and more.



Official partner of national parks



Through an official partnership on Japan's national parks with the Ministry of the Environment, East Nippon Expressway Company is working via its freeway business to deepen understanding of environmental conservation in national parks, to expand tourist demand and to stimulate local economies.

Day 1	Day 2	Day 3	Day 4	Day 5
New Chitose Airport	Asahikawa (from the Asahikawa Station area)	Wakkanai (from the Wakkanai Station area)	Haboro (from central Haboro)	Sapporo (from the Sapporo Station area)
49 km/50 min.	11 km/30 min.	31 km/40 min.	66 km/1 hour 10 min.	2 km/10 min.
1 Sapporo • Odori Park/Clock Tower	1 Asahikawa • Asahiyama Zoo	1 Wakkanai • Cape Soya	1 Mashike • Mashike Itsukushima Jinja Shrine	1 Sapporo • Nijo Market
45 km/50 min.	44 km/50 min.	47 km/50 min.	81 km/1 hour 20 min.	15 km/30 min.
2 Iwamizawa • Iwamizawa SA	2 Kembuchi • Michi-no-Eki Ehon no Sato Kembuchi	2 Toyotomi • Sarobetsu Farm	2 Sunagawa • Sunagawa Highway Oasis	2 Kitahiroshima • Mitsui Outlet Park
98 km/1 hour 20 min.	39 km/1 hour	47 km/40 min.	48 km/40 min.	5 km/10 min.
3 Asahikawa • Kawamura Kaneto Ainu Museum	3 Nayoro • Nayoro City Observatory Kitasubaru	3 Teshio • Michi-no-Eki Teshio	3 Iwamizawa • Hokkaido Greenland	3 Wattsu • Wattsu PA
18 km/30 min.	171 km/2 hours 50 min.	62 km/1 hour	41 km/40 min.	30 km/20 min.
4 Asahikawa • Ueno Farm	4 Wakkanai • Wakkanai North Breakwater Dome	4 Haboro • Hokkaido Seabird Center/ Haboro Onsen Sunset Plaza	4 Sapporo • Sapporo Beer Museum/ Sapporo Beer Garden	4 Chitose • New Chitose Airport

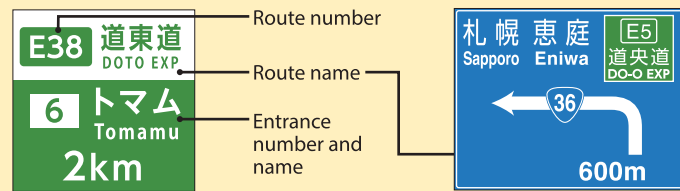
Day 1	Day 2	Day 3	Day 4	Day 5
New Chitose Airport	Otofuke (from central Otofuke)	Lake Akan area	Shiretoko (from central Shiretoko)	From Soukkyo Onsen
144 km/2 hours 10 min.	15 km/20 min.		93 km/1 hour 50 min.	75 km/1 hour 10 min.
1 Tokachiheigen • Tokachiheigen SA	1 Otofuke • Tokachi Ecology Park	1 Kushiro • Lake Akan	1 Abashiri • Abashiri Prison	1 Asahikawa • Snow Crystal Museum
21 km/40 min.	110 km/1 hour 40 min.	59 km/1 hour	52 km/1 hour	43 km/50 min.
2 Obihiro • Obihiro Racecourse (Banei Tokachi)	2 Kushiro • Kushiro Washo Market	2 Teshikaga • Kawayu Onsen	2 Saroma • Michi-no-Eki Saromako	2 Biei • Shirogane Blue Pond
140 m/1 min.	19 km/30 min.	73 km/1 hour 20 min.	53 km/1 hour	41 km/40 min.
3 Obihiro • Tokachi Mura	3 Kushiro • Kushiro Tanco Japanese Crane Reserve	3 Shiretoko • Waterfall of Oshinkoshin	3 Kitami • Kitami Mint Memorial Museum	3 Furano • Glass Forest in Furano
12 km/20 min.	60 km/1 hour	12 km/20 min.	91 km/1 hour 40 min.	127 km/1 hour 50 min.
4 Otofuke • Garden Spa Tokachigawa Onsen	4 Kushiro • Akanko Ainu Kotan	4 Shiretoko • Shiretoko Natural Center	4 Kamikawa-Soukkyo • Soukkyo Onsen	4 Chitose • New Chitose Airport

How to use expressway

1 Learn road signs

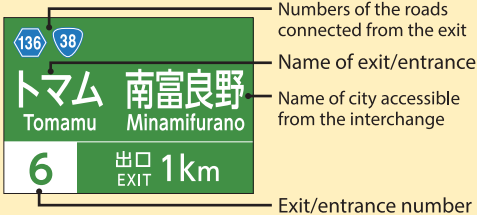
Entrance signs

These signs are placed near where freeway entrances and ordinary roads intersect.



Exit signs

These signs are placed near freeway exits.



Rest facilities sign

Types of facilities available

Rest stop name



Available facility types



Dining



Fuel



Snacks



Information

2 Obey the speed limit

The legal speed limit is 100 km/h, but when there is a speed limit specified on a sign, you may not exceed it.



This sign doesn't mean there is no speed limit. It means the limit is 100 km/h.



Note: Speed limit signs refer to km/hour.

3 Cars normally drive in the left lane (cruising lane)

When there are multiple lanes, the right lane must be left open for passing. Do not change lanes thoughtlessly.

4 No stopping in main lanes

Stopping or parking an automobile on a freeway is against the law. Unless you are parking in a parking area or similar facility or stopping because of a traffic jam or breakdown, you may not stop your car on a freeway.



5 No driving on the shoulder

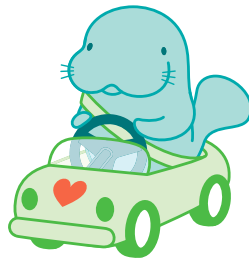
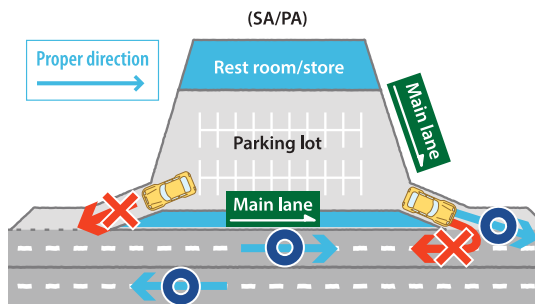
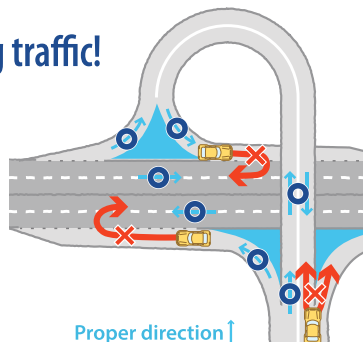
Cars may at times be forced to stop on the shoulder because of a breakdown, and police cars, ambulances and other emergency vehicles may have to drive on the shoulder at times. When the shoulder is blocked, it hinders the work of such emergency vehicles, so never drive on the shoulder, even during times of traffic congestion.

6 Don't drive into oncoming traffic!

If you see the opposite-direction lane to your left, you are going the wrong way! Pay attention to traffic rule signs, guidance signs and markings on the road surface.

If you accidentally start driving the wrong way ...

Stop in a safe place and turn on your hazard lights.

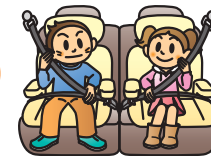


East Nippon Expressway Company Limited
Driving etiquette mascot
Manatee

7 Wear a seatbelt in all seats

The fatality rate when not wearing a seatbelt is **about 14 times** that when wearing a seatbelt. Wearing a seatbelt is required in all seats. A child seat is required for children ages 5 and under.

Don't forget child seats!



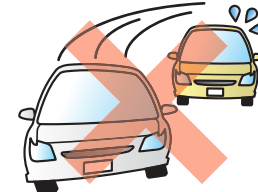
8 Maintain a safe distance between cars

Leave about 100 meters between your car and the one ahead of you when driving 100 km/h and 80 meters when driving 80 km/h. Double that distance is necessary when the road surface is wet from rain. On ice and snowy roads, normally leave 2 to 4 times that distance between your car and the one ahead of you.



9 Do not cut in front of another car

Drivers who are cut off sometimes suddenly turn the steering wheel or put on the brakes, which can result in accidents. You may not pass on a segment of freeway with just one lane in each direction.



10 Park in proper parking spaces

If a standard-sized vehicle parks in a large space or a large vehicle parks in a standard-sized space, it may inconvenience other drivers. Please park properly within a parking space appropriate for the size of your vehicle. (An attendant may direct you to a suitable parking space.) Drive slowly in the parking area. Watch out for pedestrians and other cars.

11 Avoid inattentive driving

Inattentive driving is often the direct cause of accidents. Do not look at scenery or use your mobile phone or smartphone while driving.



12 If you have an accident or breakdown...

1. Pull over onto the shoulder of the road	2. Report it	3. Get to a safe place
Pull over onto the shoulder and turn on your hazard lights. When your car has stopped, use fire pots or warning reflectors to signal to cars behind you.	There are two reporting methods, shown below.	To avoid collisions with cars approaching from behind, do not stay in your car, but instead get off the road or go to the shoulder.

1. 110 and 119

1. Dial **110 or 119** using your mobile phone or smartphone
2. Tell the police or fire department your location and situation.

2. Emergency telephone

1. Open the door
2. Pick up the receiver
3. Press the button corresponding to your situation (breakdown, accident, emergency or fire).



Note: If your car will not run because of an accident or breakdown, arrange for a tow truck.

Discover Hokkaido Driving

Discover Hokkaido Driving helps everyone from novices to seasoned travelers enjoy the region. From routes to rental cars, our site is packed with everything you'll want to know before you get behind the wheel.

<https://discover-hokkaido-driving.com/en/>



Go here for other detailed information

Information on safety while traveling in Hokkaido
<http://safety-travel.jp/>



How to pass through a toll booth

1 Entry toll booth

When you're driving a car with ETC

Enter at less than 20 km/h and drive slowly through the ETC lane. If the word "STOP" is displayed, do not back up. Turn on your hazard lights and wait where you are until a clerk arrives.



When driving a car without ETC

Stop at the entrance toll booth and take a toll ticket from the automated ticket machine. You will pay when exiting the expressway.



2 Exit toll booth

When you're driving a car with ETC

Enter at less than 20 km/h and drive slowly through the ETC lane. If the word "STOP" is displayed, do not back up. Turn on your hazard lights and wait where you are until a clerk arrives.



When driving a car without ETC

When exiting, hand your toll ticket to the attendant and pay the toll in cash or by credit card.



Less than 20 km/h

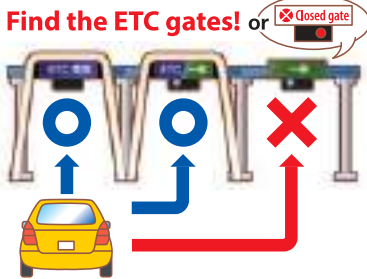
The toll between Sapporo-Nishi and Sapporo-Minami ICs is a flat fee. Pay the toll when entering the expressway.
Otaru IC ⇄ Sapporo-Nishi IC The Sapporo Nishi Interchange entrance has no toll booth, so drivers will pay the toll at the exit.

3 What's the "electronic toll collection system" (ETC)?

This expressway toll payment system allows your vehicle to pass through the tollgate and pay the toll without stopping. Securely insert your ETC card (an IC card) into the ETC device in your vehicle. When the device transmits your ETC data to the receiver at the toll booth, your toll is paid and the tollgate opens.

- When you drive through the tollgate, use either an ETC-only gate (ETC専用) or a combined gate that can be used by either ETC or cash-paying vehicles (ETC一般). (Lanes that you can use will be marked with one of these signs above the lane: ETC専用 or ETC一般).
- Entry and exit lanes are blocked by gates. If you do not have an ETC card in your ETC device, the roadside display monitor at your gate will display "STOP" and the gate won't open. This is true for both entry and exit lanes.
- If the ETC lane is "closed" and the signal is red, go through a lane manned by a clerk.
 - If an entrance is displaying a red signal: Receive a toll ticket from the entrance tollbooth attendant. When you exit the expressway, you must once again use a lane staffed by an attendant and hand the attendant your ETC card. (If you attempt to exit the expressway through an ETC lane, the gate will not open.)
 - If an exit is displaying a red signal: Use a lane staffed by an attendant and hand the attendant your ETC card.

*Note: "ETC専用" and "ETC一般" signs and signals are displayed above each lane.



Important points for ETC users

- Have you inserted your ETC card correctly?**
If you forget to insert your ETC card or if you insert it improperly, the tollgate won't open. Before you set out, please be sure that your ETC system is working.
- Never back up in a toll lane!**
If you stop in an ETC lane, please wait for an attendant to come to you. If you back up, you may hit the car behind you or the attendant.
- Keep a safe distance from the vehicle ahead of you.**
The car in front of you may stop suddenly, so maintain plenty of distance from it and decelerate to 20 km/h or less before entering.

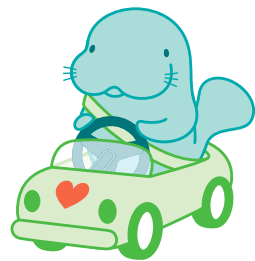
4 Regarding Smart ICs

- Wattsu Smart Interchange and Sunagawa SA Smart Interchange only use ETC. (A vehicle with an ETC card but no ETC transponder can't use a smart IC gate.)
- ETC only works at this gate when the vehicle is stopped. The gate will not open if you do not stop your vehicle. Be sure to stop.



Winter freeway awareness

East Nippon Expressway Company Limited
Driving etiquette mascot
Manatee



In winter, slowing down and maintaining a safe distance between cars are absolute requirements when driving on expressway!

Watch out for blizzards and snow blown on the ground by winds from the northwest. Even if the weather is relatively good, visibility can suddenly worsen. To be able to cope with sudden weather changes, be mindful of gathering information, slowing down and maintaining a safe distance between cars.

Be careful!

About twice as many accidents take place in Hokkaido in the winter than between spring and fall!

Accidents suddenly increase around November in a typical year. In the winter, roads are covered in snow and ice and are extremely slippery, so it is extremely dangerous to drive on them with the same speed and handling as in summer. Always think about the worst case scenario and drive with great care.

Ahead of a curve



Decelerate before a curve and never suddenly brake or turn the steering wheel!

Long descents



Your speed can increase without you realizing it. Remember to slow down and maintain a safe distance between cars.

Shaded road surfaces



Shaded locations are cold and easily freeze.

On bridges



Bridges are exposed to the wind and easily freeze. Be careful not to slip.

Tunnel entrances/exits



Strong winds and sudden snowfalls. Roads freeze easily inside tunnels.

Interchange entrances/exits



Slow down before entering the ramp at interchange entrances and exits.

'Hey, they're doing snow removal.' When this happens ...

Snow and ice countermeasures are taken 24 hours per day so drivers can more safely and comfortably use roads. Depending on road conditions, work may continue even after the weather has improved.

Do not pass snowplows during snow removal work.

Because safety is the top priority, passing is prohibited

Differences in level can be created on road surfaces by plowed snow, so passing is prohibited for safety.



We temporarily halt work so customers' cars can proceed

Passing is prohibited during snow removal work, so we periodically stop that work for a set period of time and move our snowplows to the side of the road to allow customer cars to proceed.



Thank you for your understanding and cooperation.

To customers using ETC

We do snow removal work 24 hours per day, so if you would like an ETC time period discount to be applied, allow for extra time.

Various snow and ice countermeasures

General snow removal

We clear snow using three snowplows and one sign vehicle that move at 50 km/hour or slower. Drive with plenty of distance between cars.



Widening snow removal

We use rotary plows to remove the road snow piled up on the shoulder. On bridges and overhead structures, we load snow into dump trucks and carry it away.



Ice control work

To prevent ice from forming on road surfaces, we scatter antifreeze (sodium chloride). Antifreeze could get on your car when you pass, so maintain a safe distance while driving until the work is finished.



SA・PA MAP

Sunagawa SA (downbound)

7 a.m.-9 p.m. April-Nov.
9 a.m.-7 p.m. Dec.-March
6 a.m.-10 p.m. 8 a.m.-8 p.m.
Smart IC

Iwamizawa SA (downbound)

7 a.m.-7 p.m. April-Nov.
9 a.m.-5 p.m. Dec.-March
24 hours

Nopporo PA (downbound)

24 hours

Kanayama PA (downbound)

8 a.m.-7 p.m. April-Nov.
9 a.m.-6 p.m. Dec.-March
24 hours

Kanayama PA (upbound)

8 a.m.-7 p.m. April-Nov.
9 a.m.-6 p.m. Dec.-March
24 hours

Wattsu PA (downbound)

8 a.m.-8 p.m. April-Nov.
9 a.m.-7 p.m. Dec.-March
24 hours
Smart IC

Tarumae SA (downbound)

24 hours

Usuzan SA (downbound)

8 a.m.-8 p.m. April-Nov.
9 a.m.-7 p.m. Dec.-March
24 hours

Fuel your car early

●Yuni PA is the last gas station in the direction of Obihiro on the Doto Expressway, so pay attention to how much gasoline you have left and use it if you need to.

●Every gas station but Wattsu PA has limited operating hours, so if you will be driving at night, fuel your car early.



Rest facilities to help you enjoy your long-distance drive in Hokkaido



Michi-no-Eki (Roadside Stations)

They're rest points necessary for long drives in vast Hokkaido. Roadside Station offer various services to help you have a comfortable drive.

1. Parking 2. Toilets 3. Information 4. Free wireless Internet 5. Store 6. Restaurant 7. Snacks, coffee and tea

Official website 'Kita no Michi no Eki' Compatible with smartphones. <http://www.hokkaido-michinoeki.jp/>

Hokkaido Michi-no-eki Go



The Hokkaido Michi-no-eki Go smartphone app sends you information that's useful for drives, such as scenic byway information, "Brilliant Byway" and road signs. Foreign tourists and other drivers are encouraged to enjoy safe, pleasant drives in Hokkaido.

Download on the App Store

Hokkaido Michi-no-eki Go



Scenic Byways Hokkaido

In an e effort led by Hokkaido residents, we began the excellent roads program "Scenic Byways Hokkaido" in 2018 on a trial basis on 15 freeway segments throughout the prefecture. The purpose of the campaign is to preserve the region's attractive roadside scenery. It is a joint effort with companies, government and regional road managers that aims to energize the region and create beautiful scenery and attractive tourist spaces in Hokkaido, a place of scenic byways.



Taisetsu-Furano Route
Miyama Pass
National Highway 237, Kamifurano-cho, Sorachi District



Moeru Tempoku - Ororon Route
Ororon Line
National Highway 231, Uehira, Tomamae-cho, Tomamae District



Shikotsu-Toya Niseko Route Welcome Hokkaido Area
Shikotsu Lake levee
National Highway 453, Poropina, Chitose



DRIVE HOKKAIDO!

ENGLISH 繁體中文 한글
The resource for your Hokkaido road trip

Drive Hokkaido! Download on the App Store GET IT ON Google Play In cooperation with: Hokkaido Regional Development Bureau