

Special Edition

Be prepared for earthquakes

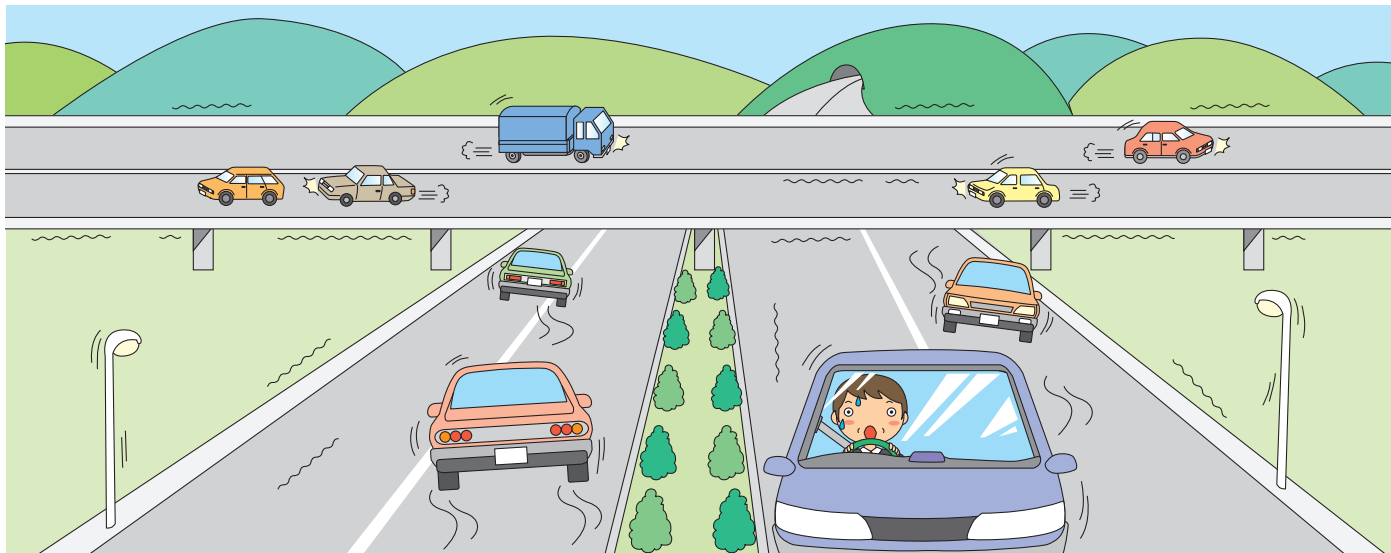
What drivers need to know
when an earthquake strikes



Expressways and Earthquakes

Japan is one of the most earthquake-prone countries in the world. A major earthquake can strike anywhere in the country at any time. On any given day, an earthquake can occur suddenly, without notice, and drivers on expressways are especially vulnerable.

In the event of an earthquake, appropriate action, taken in conjunction with everyday know-how and preparation, will not only protect you from bodily harm, but also help to prevent secondary disasters. At this point, it might be helpful to rethink one's basic approach to driving and preparedness.



If an earthquake strikes while you're driving

- **Never slam on the brakes.** Reduce your speed gradually, calmly **bring your vehicle to a halt on the left shoulder of the road**, and turn off the engine.
- If the earthquake is severe, there is a risk of rock slides and cave-ins at the base of long slopes and in the vicinity of tunnel entrances and exits, so make every effort to avoid stopping in those locations.
- **If the measured intensity of the earthquake is 4.5 (equivalent to 5-) or greater, the expressway will be shut down** for inspection of the roadway.
- In the case of a major earthquake, the main thoroughfare should be kept clear for emergency vehicles.
- If a strong earthquake strikes while you are at a rest area, please follow the staff's evacuation instructions.



Stopping on the left shoulder of the road

- Prepare for the possibility of aftershocks by leaving plenty of space between your vehicle and those in front and behind when you stop on the shoulder of the road.
- Turn off the engine. To keep from being rear-ended, turn on your **hazard lights**, and put out an **emergency warning marker**.
- Do not be misled by false rumors and misinformation. Act with caution, in accordance with instructions from the police and the expressway management, or according to information from public sources that is broadcast by radio or car TV. In coastal areas, there is a possibility that a tsunami will strike. Use radio or other sources to get information on the height of a tsunami and the estimated time it will strike.

Ways to gather information are described on page 14.

★ Don't act irresponsibly, but rely on accurate information. ★

When the Niigata Earthquake occurred, people were thrown into a panic by false rumors that an even bigger quake was going to strike. At the time of the Great Kanto Earthquake, horrific riots were instigated by false rumors of arson. The fear of earthquakes remains unchanged in modern society, and people feel extremely uneasy when an earthquake occurs. But today information is provided over the public airwaves, and no one ever needs to act without information. Do not be misled by the false rumors that some people spread. Act with caution by relying on publicly available information that is provided by radio and TV.



When you are forced to leave your car

- Turn off the engine, close all the windows completely.
- Leave the doors unlocked, and leave the key (or the remote keyless control device) in the vehicle. * The vehicle may have

to be moved if it becomes an obstacle to rescue efforts or interferes with the work of clearing an accident.

- If possible, please leave a note with your contact information in the vehicle.
- Remove all articles of value from the vehicle.
- As a precaution against the possibility of being struck by a passing vehicle, **do not remain in the vehicle or on the shoulder of the road**. Move to a safe location such as an emergency parking area or outside the guardrail, so that you will not be struck by a passing vehicle.
- Information on the overall circumstances of the disaster will be provided by road information displays and highway radio, as well as by speakers on police and expressway company patrol cars and through public address announcements at service areas and the like.

Reference:

The Disaster Countermeasures Basic Act was revised in November 2014, to authorize road administrators to order the removal of vehicles or to remove vehicles from a designated section of a road, when it is necessary to do so in an emergency.

★ Important Points ★

When an Earthquake Early Warning has been received, please react calmly while keeping the points below in mind.

What is an Earthquake Early Warning?

When an earthquake occurs, data from seismometers near the epicenter is immediately analyzed, and the source and the scale (magnitude) of the earthquake are determined. Earthquake Early Warnings are then issued as quickly as possible, based on this information, to provide estimates of the times when the principal shock of the quake will arrive at various locations and the intensity of the quake in each location.

- **Calmly turn on your hazard lights to alert the drivers around you, then slow down gradually, without slamming on the brakes.**
- **If you feel strong tremors, try to avoid any sudden steering or braking moves. Bring your vehicle to a stop on the left shoulder of the road in the safest possible manner.**

If a vehicle catches fire

- Work together with others to get the fire under control. Even just one burning vehicle can cause traffic to back up, and then the fire might spread to all of the vehicles.
- To be prepared for a vehicle fire, always carry a fire extinguisher in the vehicle. (Vehicles that transport hazardous materials are required by law to be equipped with a fire extinguisher.)

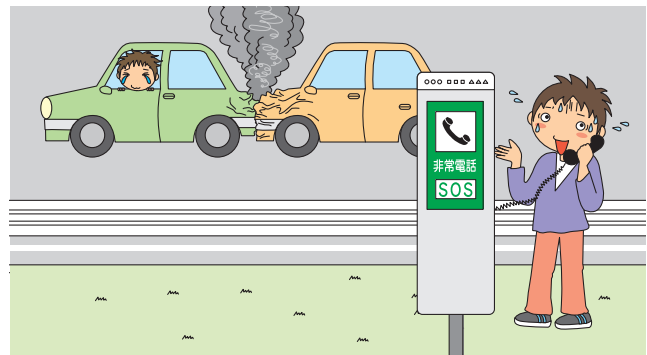


Emergency telephones are provided at 1-kilometer intervals

- When you encounter a vehicle fire, an emergency on the road, a traffic accident, or the like, contact the authorities using one of the emergency telephones that are **provided at 1-kilometer intervals (at 200-meter intervals in tunnels)**. (Simply lifting the receiver connects you automatically to the road control center.)
- You cannot use the emergency telephone to place regular calls to home phones and the like.
- In the immediate aftermath of an earthquake, it may be impossible for emergency telephone calls to go through. If you cannot place a call using the emergency telephone, please use a regular telephone to call **110 or the road emergency number (#9910)**. If you are near an interchange, contact the toll station.

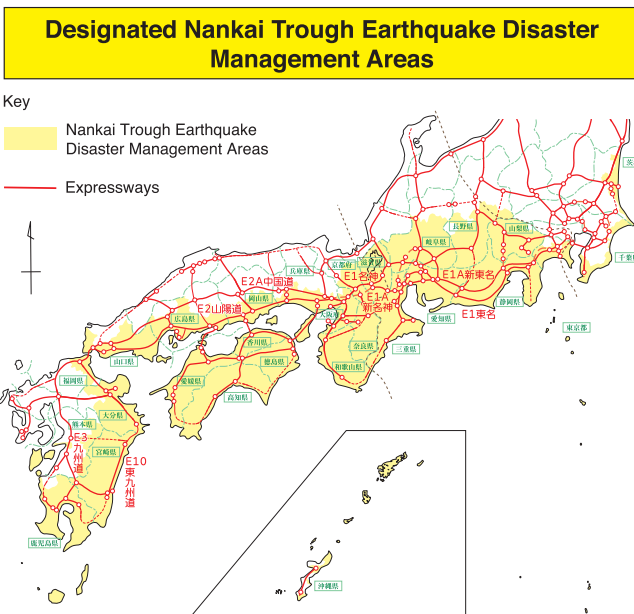
Earthquake Preparation and Emergency Supplies

- (1) Water (Keep several 500-milliliter bottles of water on hand, so it will be easy to carry one with you at all times.)
- (2) Food (items that can be eaten without cooking)
- (3) Flashlights
- (4) Portable radio (for when the car radio is inoperable)
- (5) First-aid kit
- (6) Blankets
- (7) Ropes
- (8) Fire extinguisher
- (9) Hammer for escaping from the vehicle



Nankai Trough Earthquake Disaster Management Areas

Areas that, in the event of a Nankai Trough earthquake, are predicted to experience seismic intensities of 6- or greater, as well as areas where tsunamis at least three meters high are forecast and the seawalls are low (a total of 707 municipalities in 29 prefectures in the Kanto, Tokai, Kinki, Chugoku, Shikoku, and Kyushu regions (as of March 28, 2014)), have been designated as Nankai Trough Earthquake Disaster Management Areas. The expressways in these designated areas are shown on the map below.



Expressway Traffic Control in the Event of an Earthquake Warning

- Traffic flow into areas under intensified disaster measures will be restricted.
- Entrance onto expressways from interchanges will be restricted in areas under intensified disaster measures.
- Traffic will be controlled as necessary in accordance with the circumstances.



★ Earthquake Warning Declaration

As part of the government's disaster prevention measures to minimize the damage from earthquakes, an Earthquake Warning Declaration will be issued in advance when an earthquake is forecast. In a case where an abnormality is seen in the data from the seismic monitoring system, a Prediction Council made up of six earthquake experts will be convened at the Meteorological Agency. If the council determines that a major earthquake is predicted, the Director General of the Meteorological Agency reports the finding to the Prime Minister. After consulting with the cabinet, the Prime Minister orders the issuing of the Earthquake Warning Declaration.

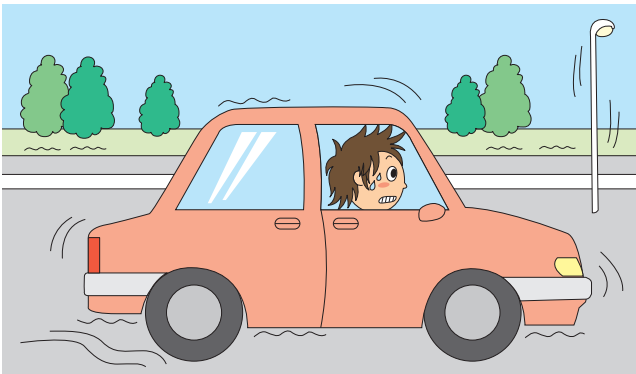
What drivers should do when an Earthquake Warning is declared

- Don't panic, but reduce your speed gradually.
- Listen to your car radio, for example, to get continuously updated earthquake information and traffic information. Take action calmly in accordance with the information.

When an Earthquake Warning is declared, expressways become emergency routes.

Emergency information after an Earthquake Warning is declared

Information will be provided by road information displays, highway radio, and radio rebroadcasts in long tunnels, as well as through public address announcements at service areas and the like.



★ Motor Vehicles and Earthquakes

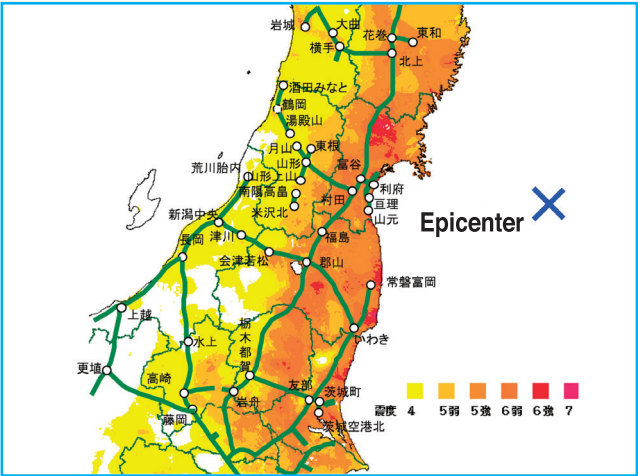
If a major earthquake strikes while you are driving, the vehicle reacts as if a tire had blown out. The road ahead starts to undulate, and steering becomes difficult. Surveys conducted after the magnitude 7.4 Miyagi earthquake on June 12, 1978, indicated that 67% of drivers felt violent tremors, and of that group, 68% reported that they stopped because they were unable to drive. These results were for drivers on ordinary roads. If an earthquake occurs while you are driving at high speed, the vehicle will feel as though it is being thrust up from below, and safe driving will be impossible. Violent tremors are generally said to last about one minute. Do your best to react to the situation calmly.

Unprecedented Major Earthquake The Great East Japan Earthquake

Overview of the Great East Japan Earthquake

On March 11, 2011, at 2:46 p.m., a magnitude 9.0 earthquake with its focus under the sea off the Sanriku Coast struck northeastern Japan. It was the most powerful earthquake ever recorded in the vicinity of Japan. The source area of the quake was approximately 100,000 square kilometers, extending roughly 500 kilometers north to south, from the sea off Iwate Prefecture to the sea off Ibaraki Prefecture, and about 200 kilometers west to east. The maximum seismic intensity was 7, in Kurihara, Miyagi Prefecture, with measurements of 6+ recorded in 36 municipalities in Miyagi, Tochigi, Fukushima, and Ibaraki Prefectures, and in one ward of Sendai. The earthquake generated gigantic tsunami waves over 10 meters high that struck locations as high as 40.1 meters above sea level, inflicting catastrophic damage all along the Pacific coast in the Tohoku and Kanto regions. In addition, the shaking of the earthquake, soil liquefaction, ground subsidence, and dam collapses wreaked havoc over a broad area, from the south coast of Hokkaido, through Tohoku, to southern Kanto, including Tokyo Bay. All the normal lifelines were torn asunder.

Seismic intensities measured by seismometers in various locations



State of damage within the jurisdiction of NEXCO East

More than 200 seismometers are installed at interchange toll stations and the like within the jurisdiction of NEXCO East. When the Great East Japan Earthquake occurred, a maximum seismic intensity of 6.3 was recorded at the Mito Minami Interchange on the Kita-Kanto Expressway. In addition, seismic intensities of at least 5.5 (equivalent to 6-) were recorded over an unprecedentedly broad area, from the Karumai Interchange on the Hachinohe Expressway to the Taipei Interchange on the Higashi-Kanto Expressway. In the immediate aftermath of the earthquake, 65% of the road network administered by NEXCO East was shut down, over a total distance of 2,300 kilometers on 35 roadways. Damage sufficient to obstruct traffic covered a total distance of 870 kilometers on 20 roadways.



Ensuring routes for emergency vehicles

Immediately after the earthquake, the NEXCO East Group began emergency inspections in an effort to identify locations where damage had occurred. In locations where the damage was such as to prevent traffic from getting through, emergency repair measures were undertaken with the priority on ensuring passage for emergency vehicles. Within 20 hours after the earthquake struck, NEXCO East had reopened primary routes for the passage of emergency vehicles and the transport of emergency provisions, with the Tohoku Expressway serving as the backbone of the network.



Highway Hotline (available 24 hours a day and updated every 5 minutes)

Hokkaido

Sapporo011(896) 1620	Asahikawa0166(54) 1620
Muroran0143(59) 1620	Obihiro0155(42) 1620

Tohoku region

Aomori017(781) 1620	Morioka019(639) 1620
Akita018(826) 1620	Sendai022(711) 1620
Koriyama024(961) 1620	Yamagata023(685) 1620

Kanto region

Tohoku, Tokyo-Gaikan, Joban, Kanetsu, Joshinetsu, Nagano, and other expressways

Iwatsuki048(758) 1620	Utsunomiya028(665) 1620
Kashiwa04(7171) 1620	Mito029(254) 1620
Oizumi03(3922) 1620	Tokorozawa04(2946) 1620
Maebashi027(252) 1620	Nagano026(278) 1620

Chuo and Nagano expressways

Hachioji042(692) 1620	Kofu055(275) 1620
Suwa0266(57) 1620		

Chiba area (Higashi-Kanto, Tateyama, Tokyo Wan Aqua-Line, and other expressways)

Chiba043(257) 1620
-------	--------------------

Keihin (Greater Tokyo-Yokohama) area (Daisan Keihin Road, Yokohama Shindo, Yokohama-Yokosuka Road)

Keihin045(780) 1620
--------	--------------------

Tomei and Shintomei expressways

Tokyo03(5491) 1620	Kawasaki044(866) 1620
Yokohama045(923) 1620	Gotenba0550(82) 1620
Fuji0545(51) 1620	Shizuoka054(288) 1620
Hamamatsu053(435) 1620		

Chubu region

Nagoya052(709) 1620	Toyokawa0533(82) 1620
Gifu058(259) 1620	Yokkaichi059(352) 1620

Hokuriku region

Tsuruga0770(21) 1620	Fukui0776(57) 1620
Kanazawa076(253) 1620	Toyama076(476) 1620
Joetsu025(535) 1620	Nigata025(286) 1620
Yuzawa025(784) 1620		

Kinki region

Osaka06(6876) 1620	Kyoto075(602) 1620
Otsu077(564) 1620	Kobe078(903) 1620

Chugoku region

Hiroshima082(876) 1620	Yonago0859(37) 1620
Okayama086(256) 1620	Hamada0855(24) 1620
Yamaguchi083(941) 1620		

Shikoku region

Kagawa087(851) 1620	Matsuyama089(905) 1620
Kochi0887(72) 1620	Tokushima088(641) 1620

Kyushu

Fukuoka092(942) 1620	Kumamoto096(275) 1620
Miyazaki0985(86) 1620	Oita097(514) 1620

Dial #8162 on your cell phone from anywhere in Japan (excluding Okinawa) to connect to the nearest regional Highway Hotline call center.

Traffic information from your cellphone or smartphone

Search for traffic information and toll information on any expressway in Japan.

NEXCO East

ドラとら ドライブトラフィック

<https://en-www.drivetraffic.jp/map.html>



NEXCO Central

Highway

<http://c-ihighway.jp/>



NEXCO West

Highway

<http://ihighway.jp/>



- Access to information is free of charge. (Telecommunications charges, if applicable, are borne by the caller.)
- Japan's Road Traffic Act prohibits motorists from using their mobile devices while driving a motor vehicle. Please access our services prior to travelling, while parked in a rest area, or by having a passenger make the call.

Others

Tune to 1620 kHz on your AM radio to listen to Highway Radio broadcasts or visit the highway information terminals available at service and parking areas nationwide for up-to-date highway information.

Traffic Safety Campaigns from NEXCO

NEXCO East



HEARTFUL HIGHWAY

The Heartful Highway Project provides motorists who use our expressways with the information they need about traffic rules and etiquette to enjoy a safe and pleasant journey on Japan's expressways.



NEXCO Central



Have Lecture.
Will Travel

NEXCO Central

Expressway Traffic Safety Seminars

NEXCO Central instructors are available to visit your organization at anytime and anyplace to lecture on safe driving techniques as part of our Expressway Traffic Safety Seminars. We use photos and data to illustrate the major points of traffic safety to your members or employees. Lectures are available for a minimum of 20 participants at a venue provided by the applicant.



NEXCO West



DRIVE & LOVE

Let's all work together
to eliminate traffic accidents.

Our motivation is expressed in the motto "For those we love and those who love us." And the objective our safety program is to eliminate traffic accidents by appealing to the sensibilities of one and all in expanding our circle of friends who understand the importance of being considerate of others when driving.



Emergency contact

In the event of an accident or breakdown, move to a safe location
and contact us as shown below. (toll free)

1-1-0 / Emergency freeway telephones / Road emergency hotline #9910

Expressway Information

We offer 24-hour-a-day support for motorists traveling on expressways.
We provide up-to-date information on tolls, ETC discounts, routes, and
other information about traveling on expressways.

NEXCO East Customer Center



0570-024-024
and 03-5338-7524

NEXCO Central Customer Center



0120-922-229

Customers with PHS/IP telephones 052-223-0333

NEXCO West Customer Center



0120-924-863

Customers with PHS/IP telephones 06-6876-9031

Japan Road Traffic Information Center

Road traffic information via the Internet

<http://www.jartic.or.jp/>

For up-to-date traffic information call:

● Nationwide/Kanto traffic information	050-3369-6600
● Hokkaido expressway information	050-3369-6760
● Tohoku expressway information	050-3369-6761
● Tohoku/Joban/Kan-Etsu expressway information	050-3369-6762
● Tomei/Shin-Tomei expressway information	050-3369-6763
● Chuo/Nagano expressway information	050-3369-6764
● Niigata region expressway information	050-3369-6765
● Tokai region expressway information	050-3369-6766
● Hokuriku/Tokai-Hokuriku expressway information	050-3369-6767
● Kinki region expressway information	050-3369-6768
● Chugoku region expressway information	050-3369-6769
● Shikoku region expressway information	050-3369-6770
● Kyushu region expressway information	050-3369-6771
● Okinawa traffic information	050-3369-6647
● From anywhere in Japan	050-3369-6666
● From your cell phone	#8011

*Connects to the nearest call center. (local toll call)

East Nippon Expressway Company / Central Nippon Expressway Company /
West Nippon Expressway Company / Road Public Welfare Association

**When you are tired, please rest at
a service area (SA) or parking area (PA).**